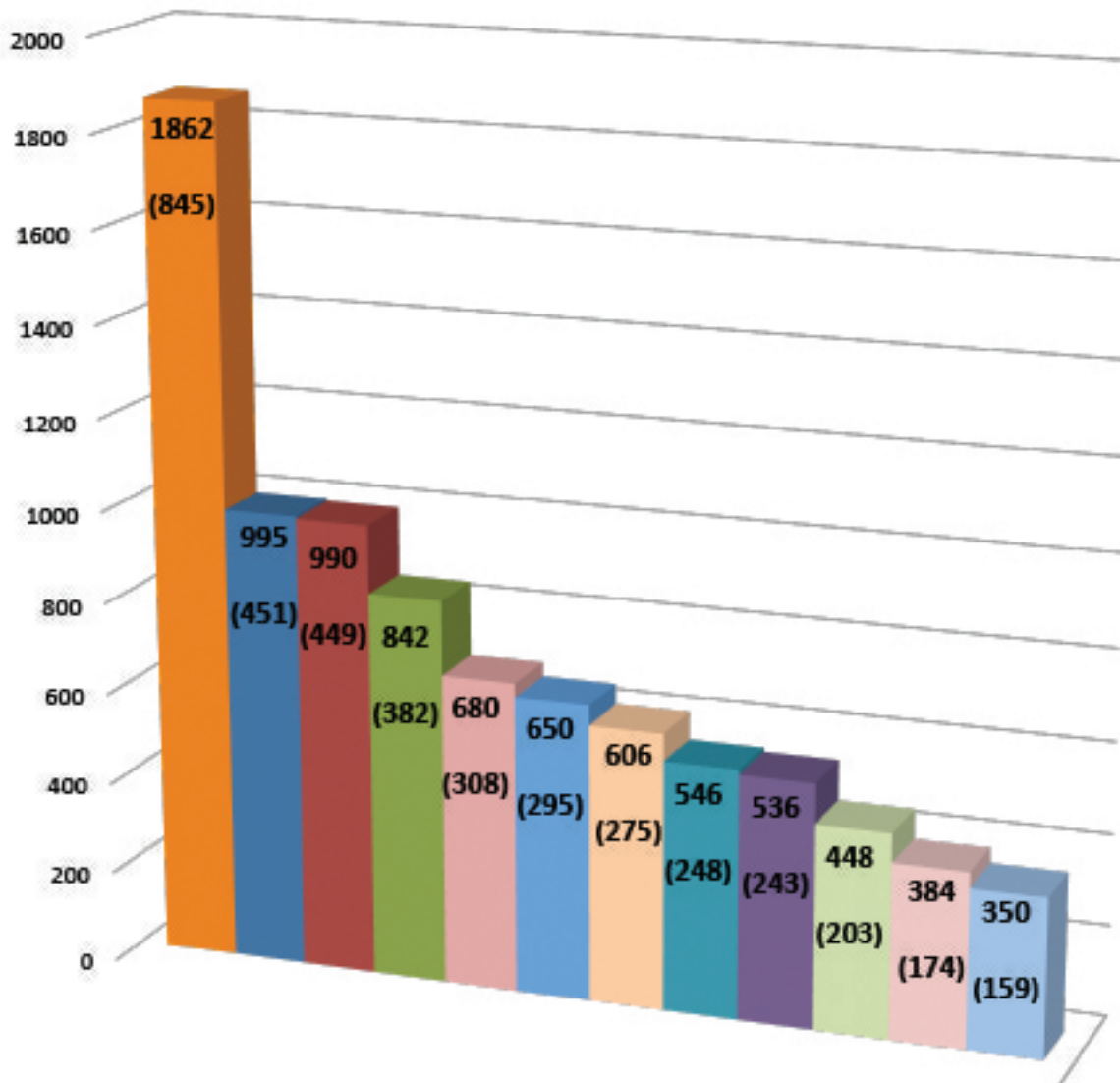


Chesapeake Bay Soft Mud Anchor Tests R/V Rachel Carson, Solomons, MD August 5-8, 2014

Average Maximum Load - lbs (kg)



- Fortress FX-37 21 lbs (10 kg) @ 45°
- Fortress FX-37 21 lbs (10 kg) @ 32°
- Danforth HT 35 lbs (16 kg)
- Ultra 46 lbs (21 kg)
- Mantus 45 lbs (20 kg)
- Manson Supreme 45 lbs (20 kg)
- Manson Boss 45 lbs (20 kg)
- Spade 44 lbs (20 kg)
- Lewmar CQR 45 lbs (20 kg)
- Lewmar Claw 44 lbs (20 kg)
- Lewmar Delta 44 lbs (20 kg)
- Rocna 44 lbs (20 kg)